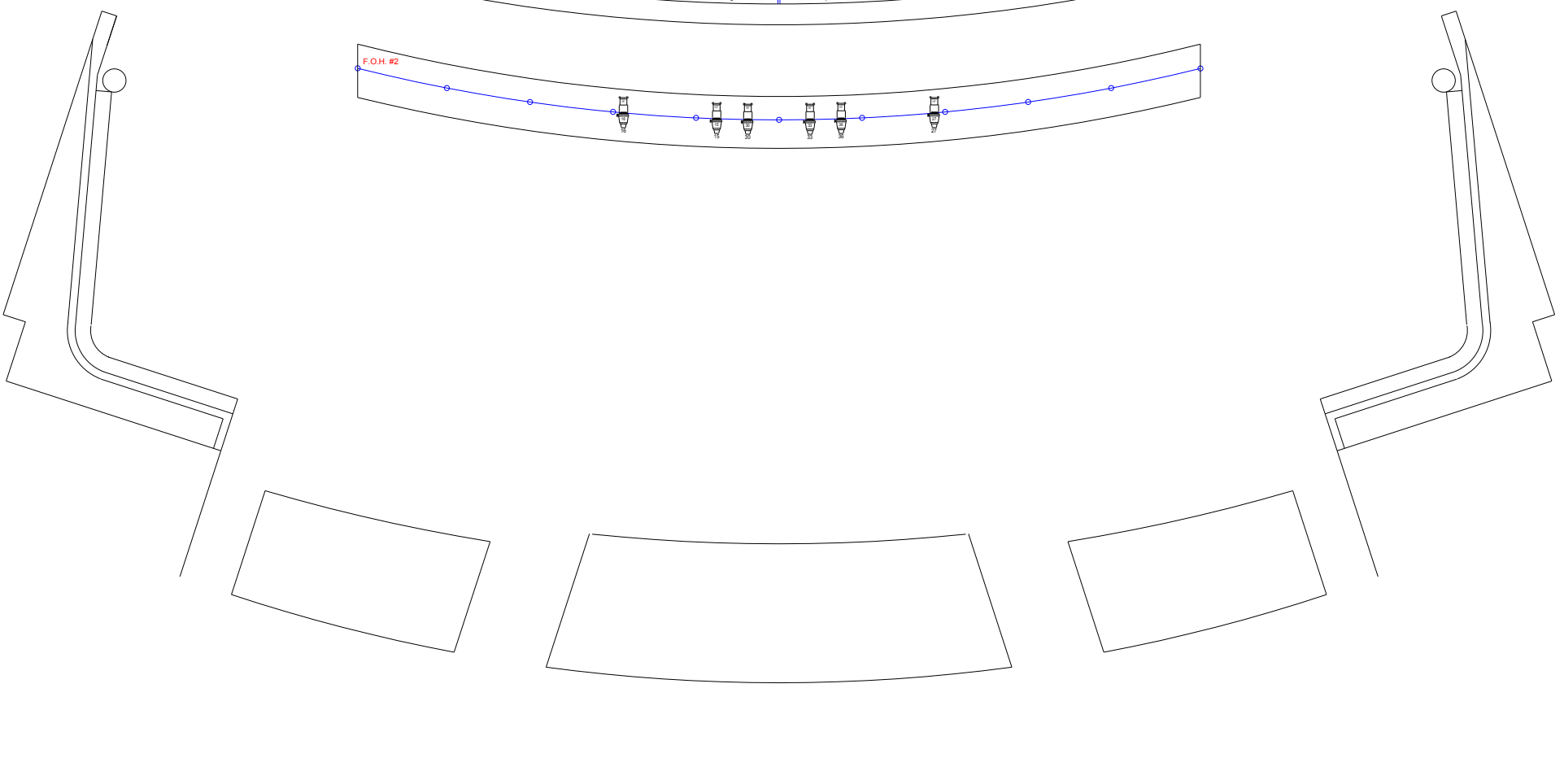
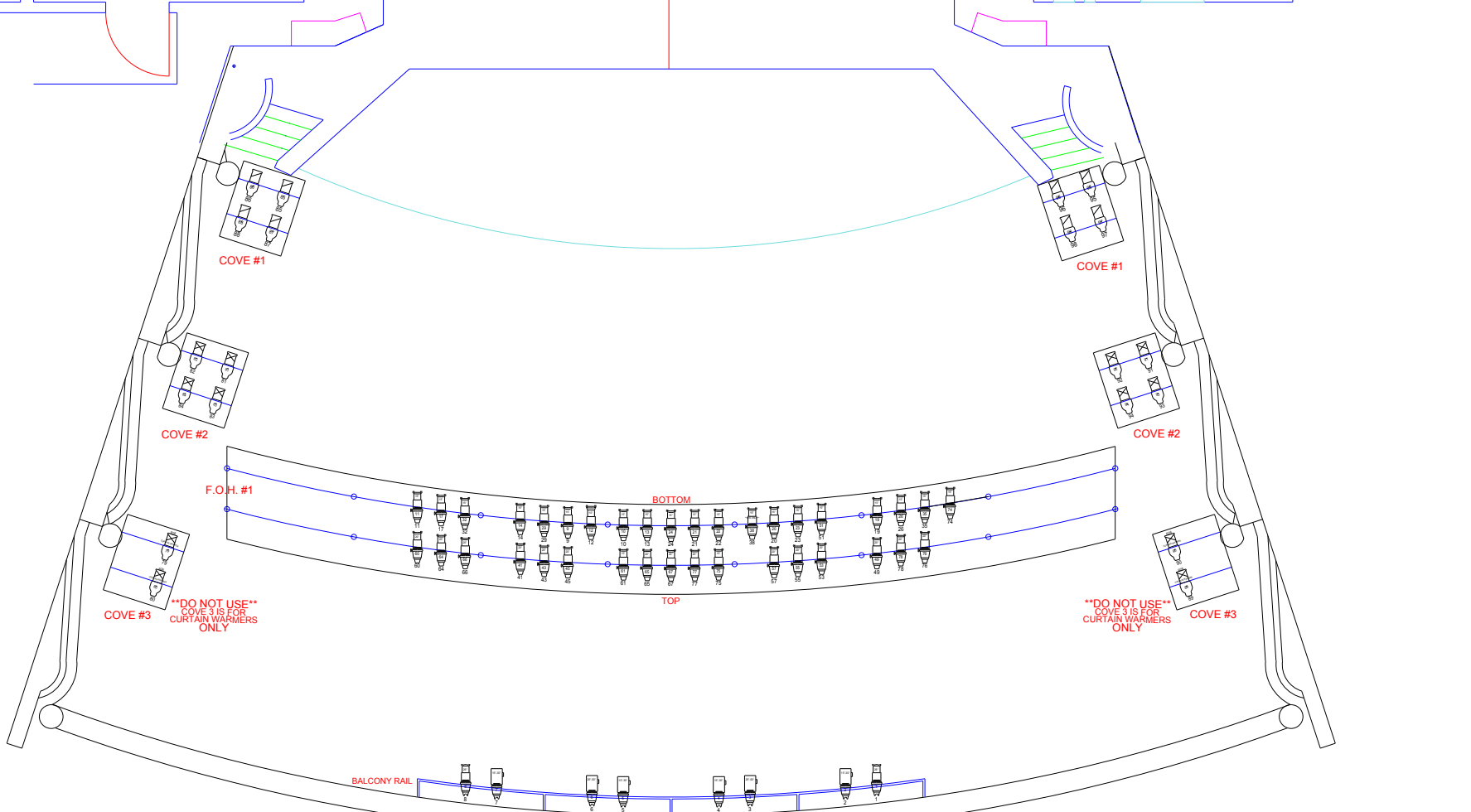
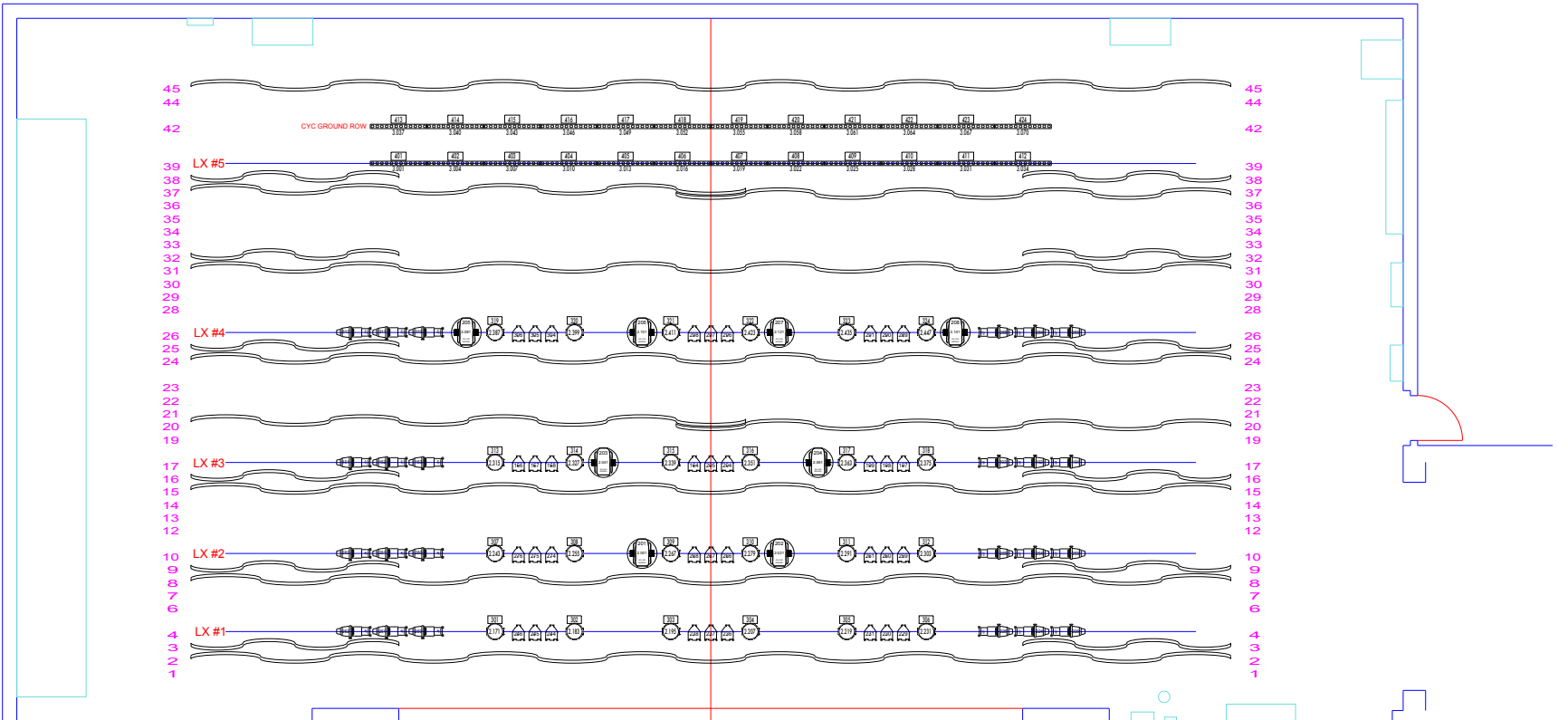


HOUSE HANG

- 45 - RED TRAVELLER
- 44 -
- 42 - CYC
- 39 - ELECTRIC #5 - CYCS
- 38 - LEG #6
- 37 - UPSTAGE TRAVELLER
- 36 -
- 35 -
- 34 -
- 33 -
- 32 - LEGS #5
- 31 - BORDER #5
- 30 -
- 29 -
- 28 -
- 26 - ELECTRIC #4
- 25 - LEGS #4
- 24 - BORDER #4
- 23 -
- 22 -
- 21 -
- 20 - MID TRAVELLER
- 19 -
- 17 - ELECTRIC #3
- 16 - LEGS #3
- 15 - BORDER #3
- 14 -
- 13 -
- 12 -
- 10 - ELECTRIC #2
- 9 - LEGS #2
- 8 - BORDER #2
- 7 -
- 6 -
- 4 - ELECTRIC #1
- 3 - LEG #1
- 2 - BORDER #1
- 1 - GRAND DRAPE



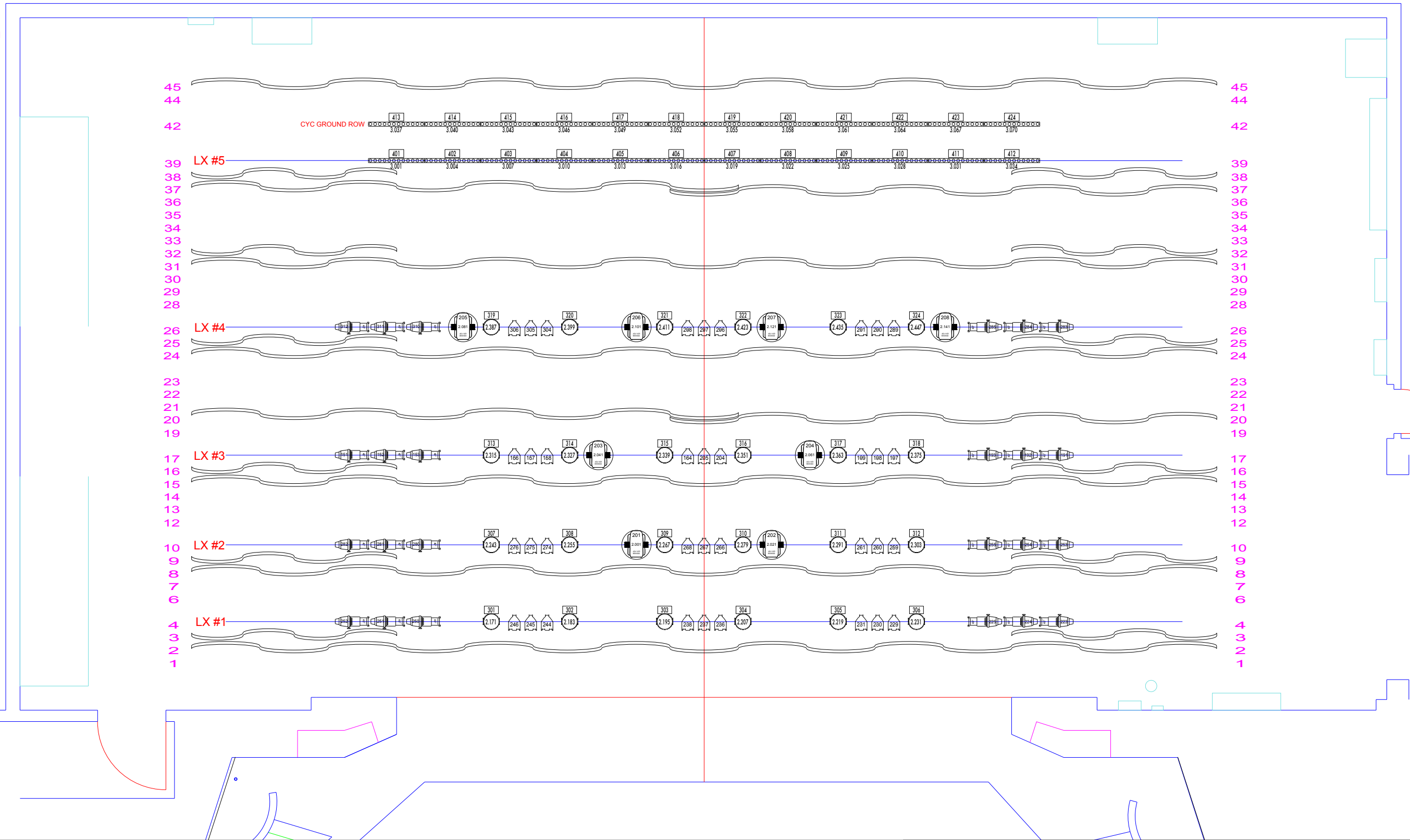
- ALTMAN 6X12 CHANNEL
- ALTMAN 6X16 CHANNEL
- LEE COLORTRAN CHANNEL
- S4 LEKO CHANNEL
- S4 LEKO ZOOM CHANNEL
- S4 PAR CHANNEL DIMMER
- ADJ 18P HEX FIXTURE DMX
- ADJ VIZI BSW300 FIXTURE DMX
- CHAUVET COLORBAND T3 FIXTURE DMX

Chrysler Theater Plot

Location: Windsor, Ontario	Scale:	Date: 07/19/2022
Drawn by: Dave Gauthier		

HOUSE HANG

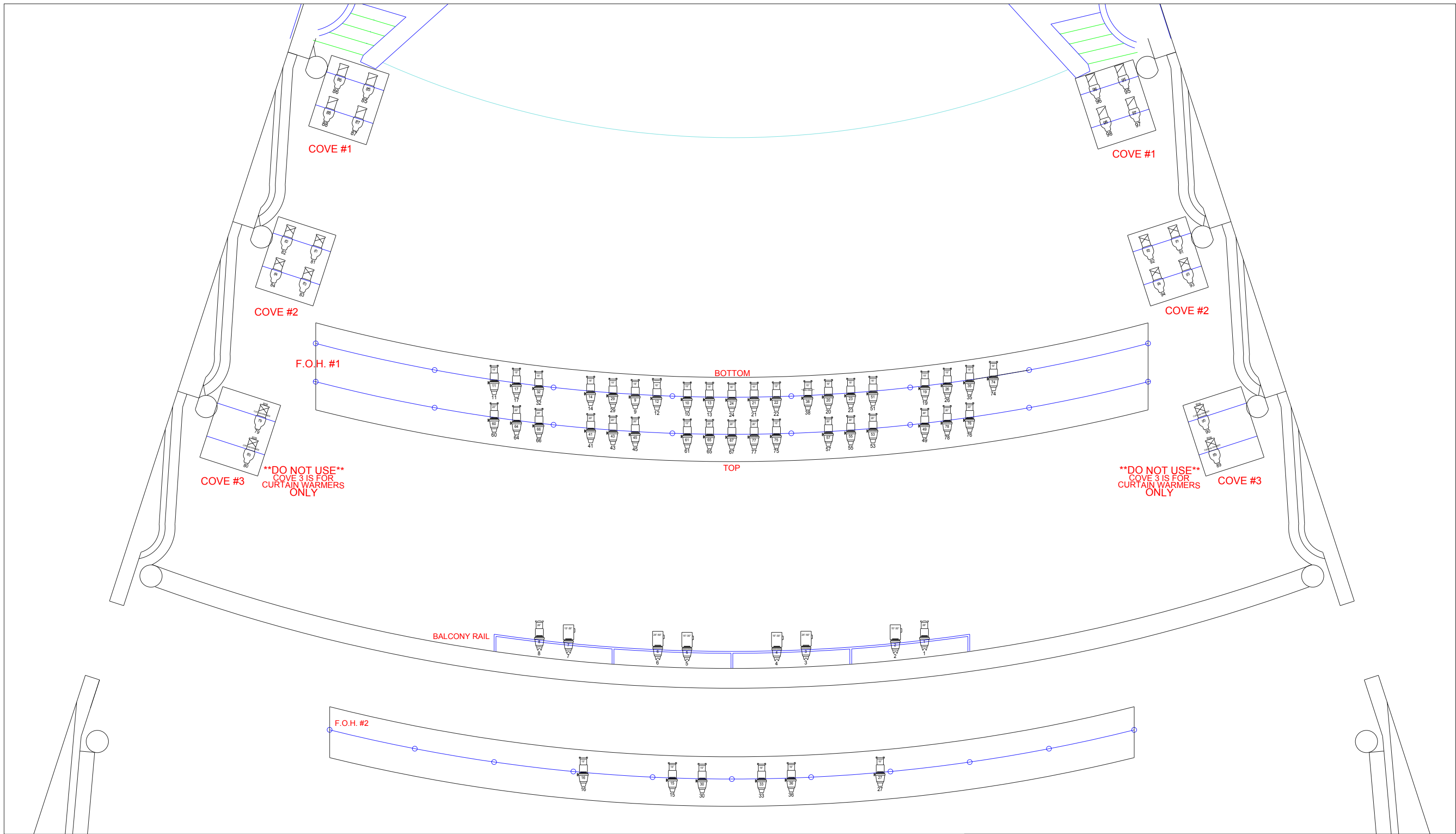
- 45 - RED TRAVELLER
- 44 -
- 42 - CYC
- 39 - ELECTRIC #5 - CYCS
- 38 - LEG #6
- 37 - UPSTAGE TRAVELLER
- 36 -
- 35 -
- 34 -
- 33 -
- 32 - LEGS #5
- 31 - BORDER #5
- 30 -
- 29 -
- 28 -
- 26 - ELECTRIC #4
- 25 - LEGS #4
- 24 - BORDER #4
- 23 -
- 22 -
- 21 -
- 20 - MID TRAVELLER
- 19 -
- 17 - ELECTRIC #3
- 16 - LEGS #3
- 15 - BORDER #3
- 14 -
- 13 -
- 12 -
- 10 - ELECTRIC #2
- 9 - LEGS #2
- 8 - BORDER #2
- 7 -
- 6 -
- 4 - ELECTRIC #1
- 3 - LEG #1
- 2 - BORDER #1
- 1 - GRAND DRAPE



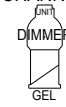
--	--	--	--	--	--	--	--	--


Chrysler Theater Plot - STAGE


Location: Windsor, Ontario	Scale	Date
Drawn by: Dave Gauthier		07/19/2022




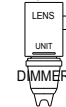
- ALTMAN 6X12 CHANNEL



- ALTMAN 6X16 CHANNEL



- LEE COLORTRAN CHANNEL

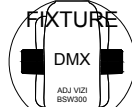

- S4 LEKO CHANNEL

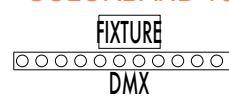

- S4 LEKO ZOOM CHANNEL


- S4 PAR CHANNEL


- ADJ 18P HEX FIXTURE


- ADJ VIZI BSW300 FIXTURE


- CHAUVET COLORBAND T3 FIXTURE



Chrysler Theater Plot - FOH

Location: Windsor, Ontario	Scale	Date
Drawn by: Dave Gauthier		07/19/2022